

CRASH

Strong Arm CRASH™



M30 (K4)



Patent Pending



Patent Pending

M50 (K12)

 **HySecurity®**
Simple. Reliable. Secure.®

StrongArmCRASH™

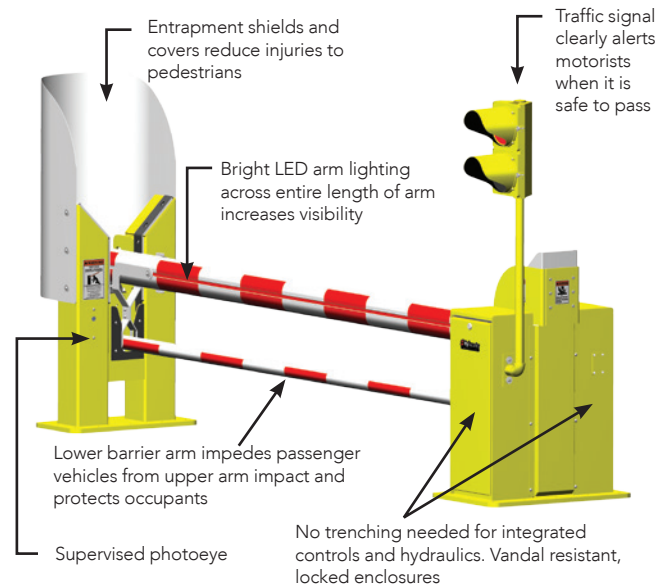
ULTIMATE HARDENED SECURITY

StrongArm M30 & M50 take barrier arms to the extreme. These machines stop a 15,000 lb truck driving 30 mph (and 50 mph respectively) in its tracks. While they protect nuclear power plants, government agencies, Department of Defense facilities and many other key assets, they also protect against accidental injury and death. Nearly all crash barrier accidents happen to authorized gate users, posing significant user peril and owner liability exposure. StrongArm M30 & M50 mitigates this fact by employing many standard safety benefits not offered by competitor operators.



UNMATCHED USER SAFETY

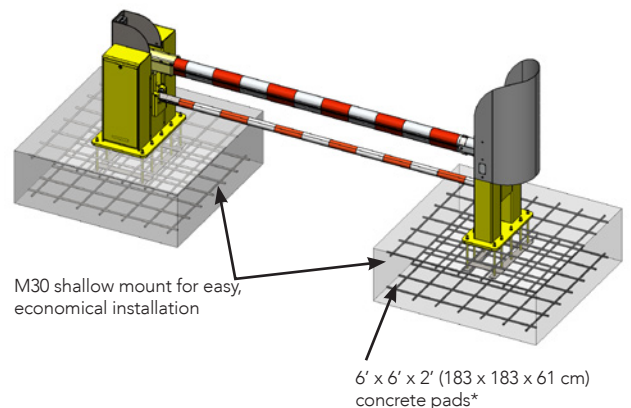
- **Lower barrier arm** ensures that initial impact on small passenger vehicles occurs at the front of the vehicle, slowing or stopping the vehicle before upper barrier arm impacts the passenger compartment. Most other designs, without a lower arm, would hit at windshield level sheering off the top half of a smaller vehicle. A smaller vehicle is more likely to be driven by a non-threatening innocent motorist.
- **Entrapment shield** around catch post prevents potential pedestrian entrapment or injury.
- **Bright LED arm lighting** increases visibility, especially at night and in harsh weather, to prevent accidental collision.
- **Integrated photo eye** automatically detects people or vehicles in the way of the barrier arm during closing.
- **Traffic signal** clearly alerts motorists when it is safe to pass through the barrier arm opening.



StrongArm M30

SIMPLE, LOW COST INSTALLATION

- **Plate mount design** allows foundation construction independent of equipment installation.
- **Self contained controls and hydraulics** reduce the need for expensive and time consuming trenching of hydraulic hose and wiring to a remote control panel.
- **Ultra rugged hot dip galvanized steel for optimal corrosion protection.** Available option: Durable "Signal Yellow" polyester powder coat over zinc plate for an enduring, attractive finish.
- **Shallow M30 mount** foundation reduces installation time and worries about utilities, water table, and other site concerns.

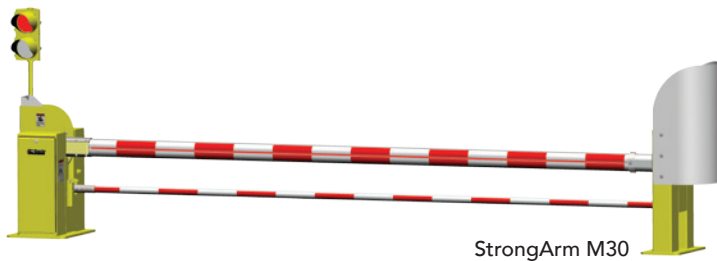


*4' x 4' x 4' (122 x 122 x 122 cm) pad configuration also available for StrongArm M30

Crash Tested Barriers

StrongArm (M30)TM Patent Pending

- Crash certified to **ASTM F2656-07 M30, P1** stops a 15,000 lb (6.8 metric tons) truck traveling 30 mph (48 km/h). Penetrated less than 1 meter.
- **Fast arm speed**, 6-8 seconds, reduces traffic backup by minimizing gate open time thus allowing more vehicles per hour in fewer lanes.
- Deploy barrier arm in response to a threat in as little as 5 seconds with **Emergency Fast Close**.
- **Unique dual arm design** prevents a large truck or a small passenger vehicle from breaching the security perimeter.
- **Foundation** 6 x 6 x 2 ft (183 x 183 x 61 cm) or 4 ft square (122 cm square); 3,000 psi concrete, #5 rebar, grade 60



StrongArm (M50)TM Patent Pending

- Crash certified to **ASTM F2656-07 M50, P2** stops a 15,000 lb (6.8 metric tons) truck traveling 50 mph (80 km/h). Penetrated less than 1.3 meters.
- **Fast arm speed**, 6-8 seconds, reduces traffic backup by minimizing gate open time thus allowing more vehicles per hour in fewer lanes.
- Deploy barrier arm in response to a threat in as little as 5 seconds with **Emergency Fast Close**.
- **Unique dual arm design** prevents a large truck or a small passenger vehicle from breaching the security perimeter.
- **Foundation** 6 x 6 x 4 ft (183 x 183 x 122 cm) 4,000 psi concrete, #6 rebar, grade 60



Ultra Reliable

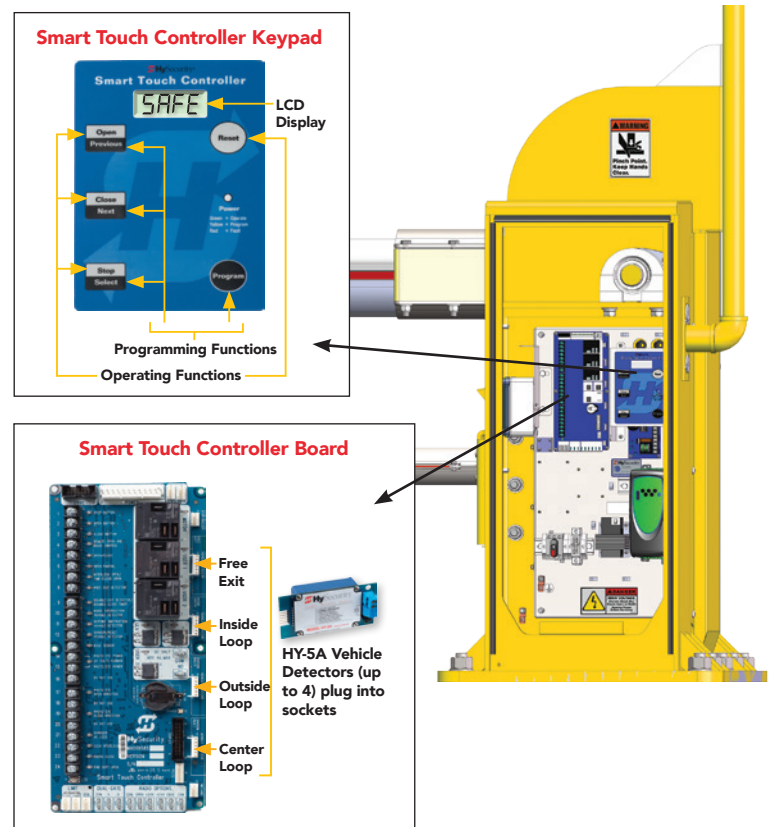
PROVEN HIGHEST RELIABILITY DRIVE

- **Thirty years experience** designing and manufacturing automated gate operators with highest reliability, longest life and the most powerful drive system in the market.
- **Proven hydraulic drive** securely operates tens of thousands of HySecurity gate operators worldwide. Extremely low failure rate.
- **Variable flow hydraulic system** generates optimized barrier arm motion, enabling high speed, ultra smooth operation which prevents bounce or excessive wear on components.
- **Double acting hydraulic system** opens barrier arm to full 90° vertical and allows hydraulic locking in closed position which eliminates the need for external locking devices.
- **Simple, compact hydraulic system** contains only one gallon of high performance environmentally friendly hydraulic fluid. Biodegradable fluid available upon request.
- **-40° F to 158° F (-40° C to 70° C)** temperature range using environmentally friendly Uniflow fluid. -10° F to 158° F (-23° C to 70° C) using biodegradable fluid. Operates without fail in the hottest and coldest climates.



PROVEN INTEGRATED, INTELLIGENT CONTROLS

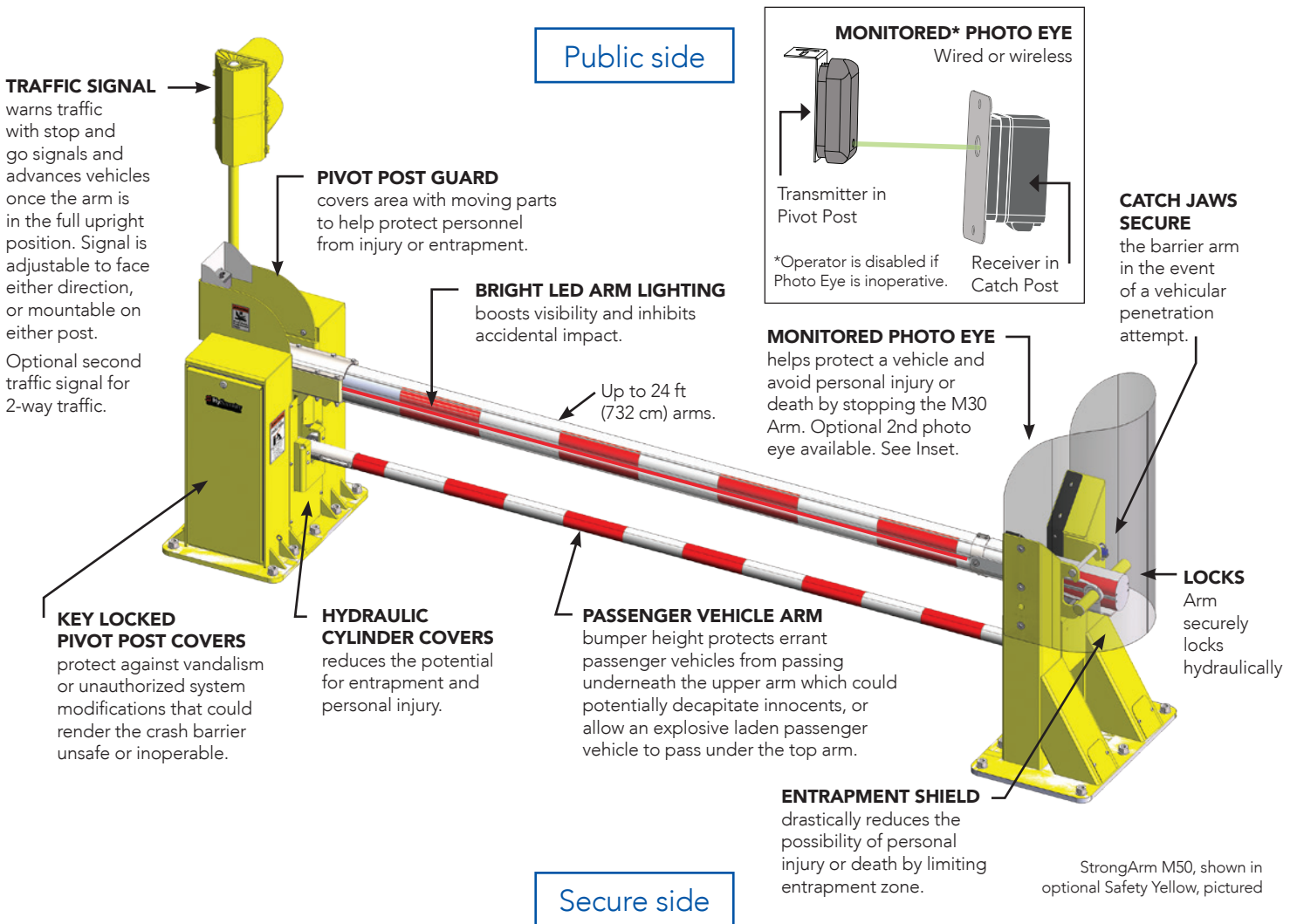
- As the most reliable microprocessor-based control board in the industry, the **Smart Touch Controller** supplies extensive features, plus RS-485 command and control interfacing for networking systems.
- **Smart Touch Control** gives you seamless synchronization with all HySecurity operators for master-slave, Sally port, sequenced gate or other specialized applications.
- Over **10 years of proven field reliability** communicating alerts, status, faults, and security breach conditions.
- Smart Touch Controller and keypad are conveniently and securely mounted **inside the operator**.
- **Integrated encoder provides precise arm positioning** and enables precise motion control eliminating the vulnerability of exposed mechanical limit switches.
- **Connect to a laptop** using HySecurity's Smart Touch Analyze and Retrieve Tool (S.T.A.R.T.) computer interface to upload the latest operator software, download fault logs, generate diagnostics, and program the operator.



Crucial User Safety & Security

USER SAFETY IS NOT OPTIONAL

Many user safety devices are standard equipment on the StrongArm M30 and M50, reducing possibility of injury and end user liability.



ADDITIONAL SAFETY FEATURES

BUZZER Standard equipment in all HySecurity products, the WARN BEFORE BUZZER provides a loud audible beep in short continuous bursts 3 seconds prior to the barrier moving open or close and all the while the barrier arm is in motion.

HY-5A Using HY-5A vehicle detectors eliminates the possibility of loop crosstalk since each loop is assigned its own frequency range. False close signals due to crosstalk are never an issue.

ADDITIONAL SECURITY FEATURES

NO EXTERNAL LIMIT SWITCHES or resetting the limits after power loss. The hydraulic cylinder incorporates magnetic sensors, alleviating the need for vulnerable external limit switches or recalibration.

REMOTE OPERATOR PANEL operates the crash barrier from a secure location keeping area personnel out of harm's way.

MAG LOCK option available.

BATTERY BACKUP UPS MODEL provides 24/7 DC UPS battery backup. In the event of a complete power outage, the StrongArm M30 and M50 UPS remains full-powered and functioning. (Available 2013)

Strong Arm CRASH™

TYPICAL SITES

Ports
Petrochemical
Nuclear
Hydroelectric
Embassies
Highway
Airport
Critical infrastructure
Military base
Secure corporate facilities
Car rental facilities

STANDARD BENEFITS

- Ultra reliable hydraulics and controls
- Extremely low maintenance
- Highest lifetime value - lowest lifetime cost
- Dual arm design
- Highly visible LED lighting across entire length of upper arm
- Traffic signal
- Supervised photo eye
- Emergency Fast Close
- Hand pump for manual operation
- Integrated encoder provides precise arm positioning
- NEMA 3R all weather enclosure with superior hot dip galvanized anti-corrosion finish
- Arm hydraulically locks - no need for Mag lock
- Environmentally friendly, wide temperature range fluid

OPTIONAL BENEFITS

- HY-5A vehicle detectors (plug-in)
- Biodegradable, non-toxic fluid
- Heater, recommended for biodegradable, non-toxic fluid in cold climates
- Main & remote operator panels
- Mag lock
- Custom color paint
- Secondary traffic signal for bi-directional traffic
- Uninterruptible Power Supply (UPS) for many cycles after AC power loss (Available 2013)



SYSTEM DESIGN SUPPORT: Contact HySecurity for CAD drawings, specifications, help with custom site requirements, installer referrals, and other technical support. www.hysecurity.com

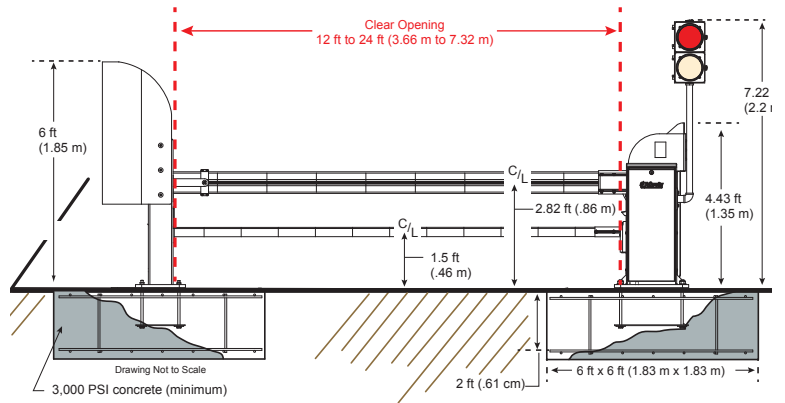
SPECIFICATIONS

StrongArm (M30)™

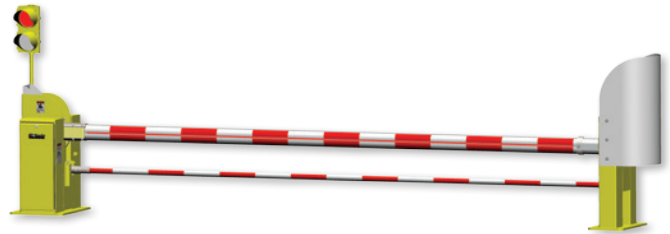
Patent Pending

Model	StrongArm M30
Crash Certified	ASTM F2656-07 M30, P1
Duty Cycle	Continuous duty*
Horsepower	2 hp
Open/Close Time	6 to 8 seconds depending on arm length
Emergency Fast Close Time	5 to 7 seconds depending on arm length
Clear Opening	12 ft to 24 ft in 2 ft increments (3.66 m to 7.32 m in .61 m increments) Call for custom arm length
Ingress Protection	IP56
Temperature Rating	-40° F to 158° F (-40° C to 70° C) using environmentally friendly Uniflow fluid or -10° F to 158° F (-23° C to 70° C) using biodegradable fluid. No heater necessary.
1 Phase Power	208/230 VAC, 50/60 Hz 20A
3 Phase Power	208/230 VAC, 50/60 Hz 20A, 380/480 VAC, 50/60 Hz 15A
Communication	RS-232, RS-485, Ethernet option
User Controls	Smart Touch Controller with 70+ configurable options. Smart Touch keypad and display or a PC using S.T.A.R.T. software.
Relays	Three configurable user relays: one 30VDC, 3A solid state and two 250VAC, 10A electromechanical
Foundation	6 x 6 x 2 ft (1.83 x 1.83 x 1.22 m) or 4 ft square (1.22 m square) 3,000 psi concrete, #5 rebar, grade 60
Warranty	5 year
Available with UPS Battery Backup	
UPS Backup Model	StrongArm M30 UPS**

*100 cycles per hour **UPS model available TBA



StrongArm M30 operator, barrier arm, and foundation dimensions

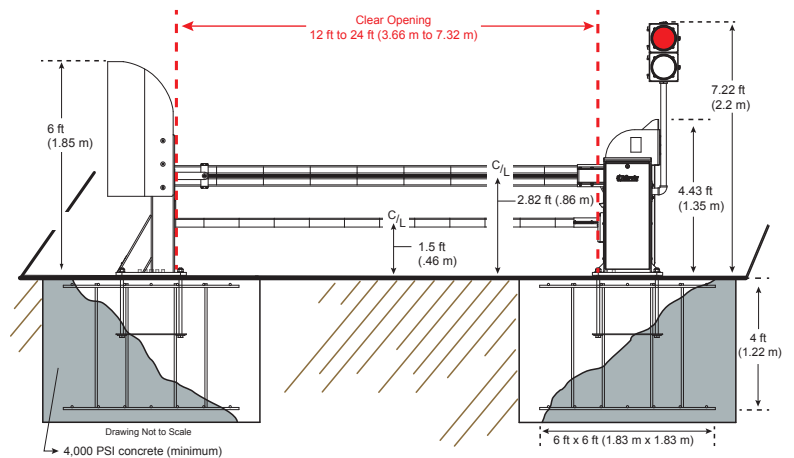


StrongArm (M50)™

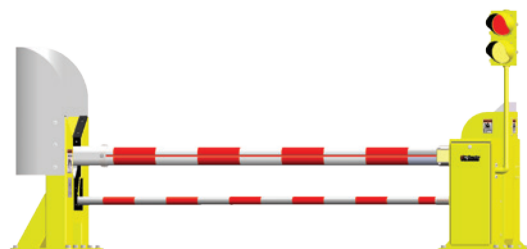
Patent Pending

Model	StrongArm M50
Crash Certified	ASTM F2656-07 M50, P2
Duty Cycle	Continuous duty*
Horsepower	2 hp
Open/Close Time	6 to 8 seconds depending on arm length
Emergency Fast Close Time	5 to 7 seconds depending on arm length
Clear Opening	12 ft to 24 ft in 2 ft increments (3.66 m to 7.32 m in .61 m increments) Call for custom arm length
Ingress Protection	IP56
Temperature Rating	-40° F to 158° F (-40° C to 70° C) using environmentally friendly Uniflow fluid or -10° F to 158° F (-23° C to 70° C) using biodegradable fluid. No heater necessary.
1 Phase Power	208/230V, 50/60 Hz 20A
3 Phase Power	208/230V, 50/60 Hz 20A, 380/480V, 50/60 Hz 15A
Communication	RS-232, RS-485
User Controls	Smart Touch Controller with 70+ configurable options. Smart Touch keypad and display or a PC using S.T.A.R.T. software.
Relays	Three configurable user relays: one 30VDC, 3A solid state and two 250VAC, 10A electromechanical
Foundation	6 x 6 x 4 ft (1.83 x 1.83 x 1.22 m) 4,000 psi concrete, #6 rebar, grade 60
Warranty	5 year
Available with UPS Battery Backup	
UPS Backup Model	StrongArm M50 UPS**

*100 cycles per hour **UPS model available TBA



StrongArm M50 operator, barrier arm, and foundation dimensions



StrongArm (M50)™ K12



StrongArm (M30)™ K4

